



WALNUT GROWERS ASSOCIATION OF MOLDOVA

**PROFESSIONAL WALNUT GROWERS
WITH TRADITION AND PASSION FOR WHAT THEY DO**

**WE GROW
THE TASTIEST WALNUTS**

Grown with care and love in Moldova

**www.moldovanuts.org
oleg.tirsina@gmail.com
+373 69 358 996**

2023 Edition

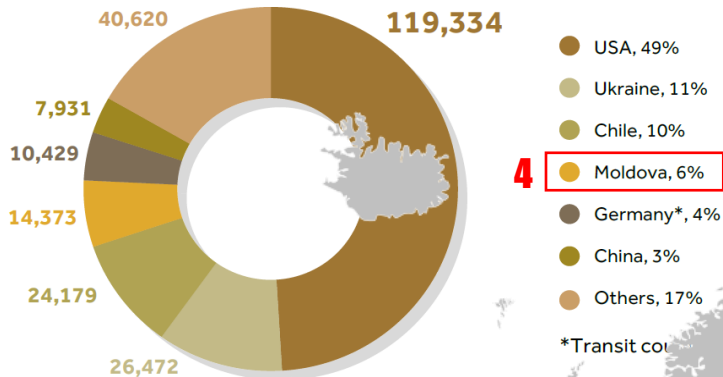


WALNUT GROWERS ASSOCIATION OF MOLDOVA

5-YEAR AVERAGE WALNUT EXPORTS

Shelled (Metric Tons)

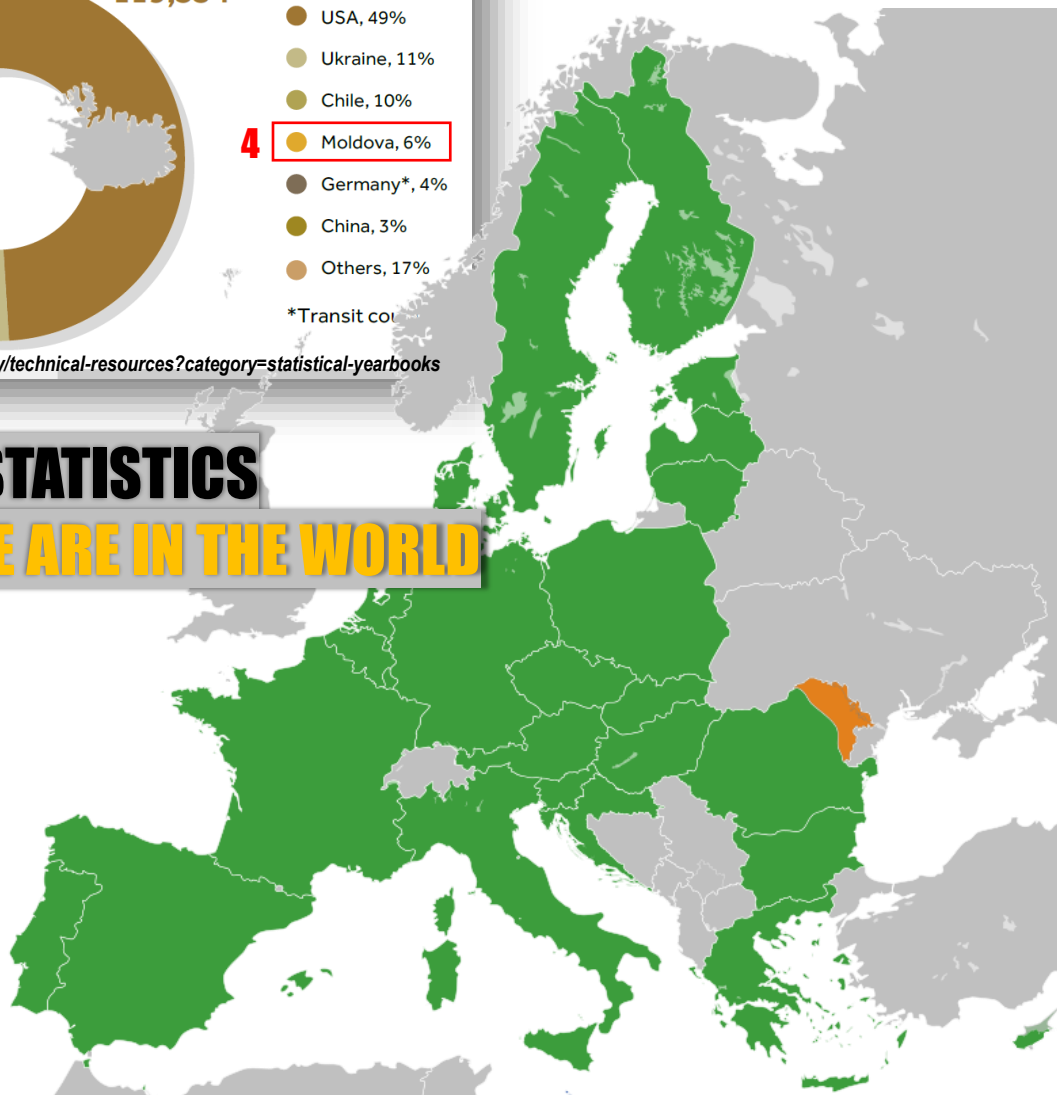
2015-2019



<https://www.nutfruit.org/industry/technical-resources?category=statistical-yearbooks>

STATISTICS

WHERE WE ARE IN THE WORLD



WE GROW 35-40 000 TONS OF WALNUTS YEARLY WITH A 7% INCREASE PER YEAR

MOLDOVA RANKS AS 4TH WORLD EXPORTER OF WALNUTS (2015-2019)

WE ARE THE 4TH WALNUT SUPPLIER FOR THE EUROPEAN UNION

SINCE THE 1990s MOLDOVA HAS BEEN ACTIVELY DEVELOPING ITS WALNUT SECTOR, GROWING EXPORTS AND EXPANDING MARKET GEOGRAPHY.



WALNUT GROWERS ASSOCIATION OF MOLDOVA

HISTORIC FACTS **HOW IT ALL BEGUN**

WALNUTS GROW IN
MOLDOVA FOR MORE THAN
2000 YEARS...

THE FIRST COMMERCIAL
ORCHARDS WERE
ESTABLISHED IN THE 1990s.

TODAY WE ACCOUNT FOR
MORE THAN 20 000 HA...

WALNUT GROWERS
ASSOCIATION WAS
FOUNDED IN 2006 AND
OVER THE YEARS HAS
BECOME THE LARGEST
GROWERS UNION IN
MOLDOVA



WALNUT GROWERS ASSOCIATION OF MOLDOVA

MEANS & RESOURCES

WHAT DEFINES AND MAKES US UNIQUE

NATURALLY RICH SOILS...

PLENTY OF SUN...

AND PASSION FOR THE JOB!

**ARE THE MAIN ASSETS OF A
UNIQUE PRODUCE THAT
WILL SURPASS YOUR
EXPECTATIONS IN TASTE,
FLAVOUR AND LIGHT COLOR
OF THE KERNELS**

**A PERFECT BALANCE OF
TRADITIONAL WAYS OF
GROWING AND VERY FEW
CHEMICAL INPUTS MAKES
THE WALNUTS WE GROW
THE BEST CHOICE FOR YOUR
HEALTHY CONSUMPTION**



WALNUT GROWERS ASSOCIATION OF MOLDOVA

THE GROWERS...

FARMING FOR YOUR HEALTH

MORE THAN 2000 SMALL, AVERAGE AND LARGE ORCHARDS ARE MAKING UP THE WALNUT GROWERS OF MOLDOVA

UNITED FOR SHARING EXPERIENCE AND HELPING EACH OTHER TO PUT OUT THE BEST QUALITY AND UNIFORMITY OF THE PRODUCE, THEY ARE YOUR TRUSTWORTHY PARTNERS

THEY ASSOCIATE BASED ON GEOGRAPHICAL PROXIMITY AND VARIETY AND WORK TOGETHER TO DELIVER LARGER WALNUT QUANTITIES



WALNUT GROWERS ASSOCIATION OF MOLDOVA

THE SOCIAL IMPORTANCE OF WALNUT GROWING IN MOLDOVA IS CONSIDERABLE

WE ESTIMATE OVER 100000 PEOPLE WORKING IN THE NUT SECTOR ALONE. THEY RELY ON THIS ACTIVITY FOR THEIR INCOMES

THE HARD WORKING MEN AND WOMEN OF MOLDOVA ARE THE TRUE MOVING FORCE OF THE NUT SECTOR. THEY ARE DEVOTED TO THE WORK THEY DO, CAREFUL ABOUT NATURE & ENVIRONMENT, INSPIRED BY THE APPRECIATION OF THE PRODUCE THEY GROW

THE PEOPLE...

COMMITMENT & HARD WORK



WALNUT GROWERS ASSOCIATION OF MOLDOVA

**MATERIAL & EQUIPMENT
TECHNICALLY UP TO THE TASK!**

**OVER 25 LARGE
PROCESSING PLANTS AND
FACILITIES OPERATE
ACROSS THE COUNTRY,
SPECIALIZED IN KERNEL
PACKING AND EXPORT ALL
OVER THE EUROPEAN
CONTINENT AND BEYOND.
WE ARE ABLE TO SUPPLY
VARIOUS NEEDS IN BOTH IN-
SHELL AND SHELLLED
WALNUTS**

**MOST OF OUR GROWERS
ARE FULLY TECHNICALLY
EQUIPPED TO CARRY OUT
ALL NEEDED STEPS UP TO
THE DRIED NUT IN
WAREHOUSES**





WALNUT GROWERS ASSOCIATION OF MOLDOVA

SKILLS & EXPERTISE

KNOWLEDGE IN THE SERVICE OF GROWERS

**DECADES OF WALNUT
GROWING MADE US
DEVELOP SKILLS AND
EXPERIENCE**

**THAT ENABLES US TODAY TO
GROW HEALTHY, PEST AND
DISEASE FREE WALNUTS
COMPLYING WITH QUALITY
STANDARDS AND FOOD
SAFETY REQUIREMENTS**

**OUR SPECIALISTS ARE
CONSTANTLY MONITORING
AND TRAINING GROWERS
TO BE UP-TO-DATE WITH
THE RESPONSIBLE FARMING
PRACTICES**



WALNUT GROWERS ASSOCIATION OF MOLDOVA

GETTING TOGETHER CONFERENCES & PRACTICAL SEMINARS

EVERY YEAR MOLDOVAN GROWERS MEET AT A NATIONAL CONFERENCE TO INTERACT AND SHARE AND WORK TOGETHER FOR A BETTER FUTURE

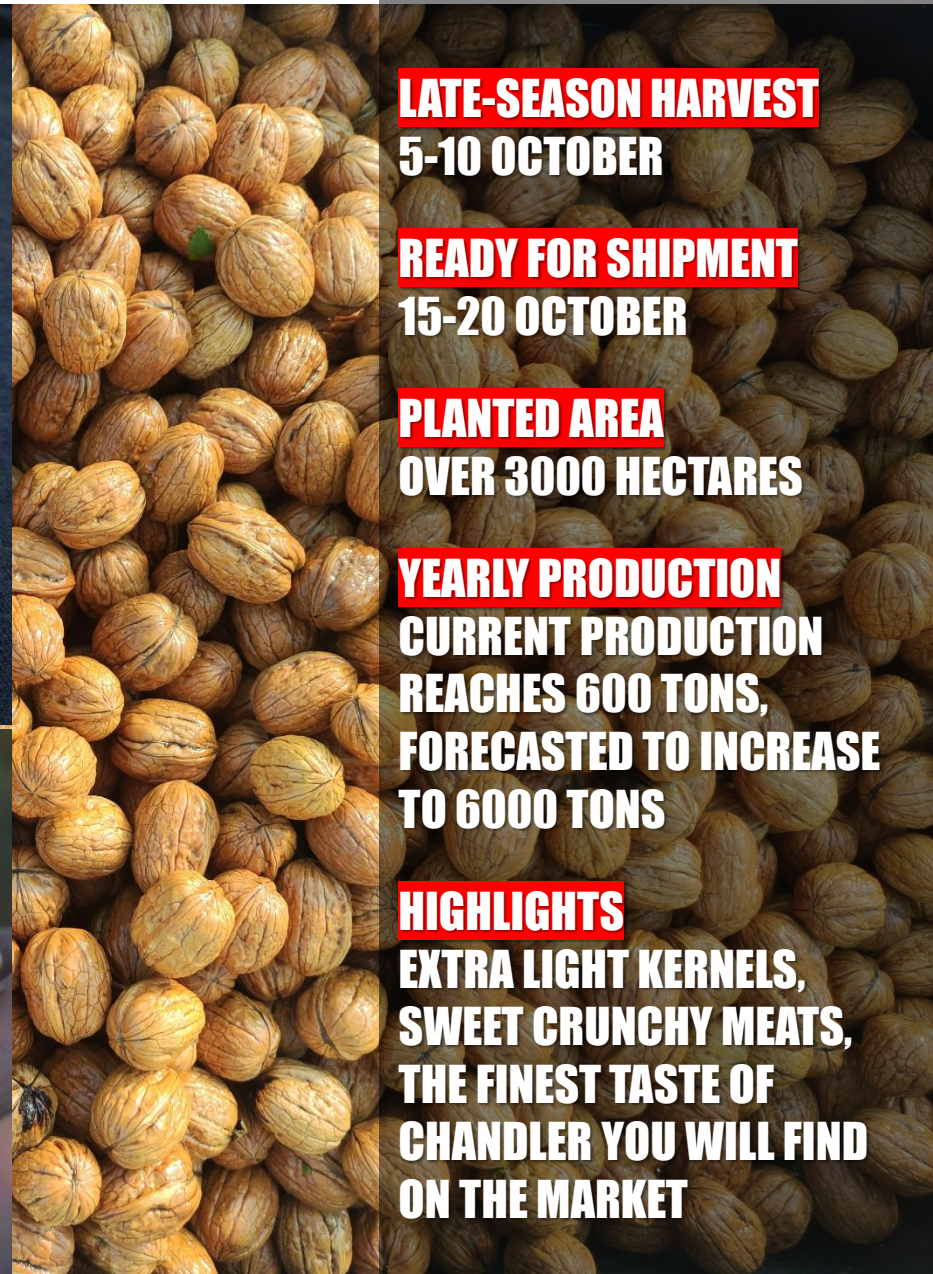
SEVERAL MEETINGS PER YEAR ARE ALSO HELD IN ORDER TO BRING UNITY AND SOLIDARITY AMONG PARTICIPANTS AND ACT AS A STEERING WHEEL IN THE BRANCH.

WE WELCOME ALL OUR PARTNERS TO ATTEND THESE EVENTS AND MEET OUR GROWERS AND PROCESSORS



WALNUT GROWERS ASSOCIATION OF MOLDOVA

The varieties we grow: **CHANDLER**



LATE-SEASON HARVEST

5-10 OCTOBER

READY FOR SHIPMENT

15-20 OCTOBER

PLANTED AREA

OVER 3000 HECTARES

YEARLY PRODUCTION

**CURRENT PRODUCTION
REACHES 600 TONS,
FORECASTED TO INCREASE
TO 6000 TONS**

HIGHLIGHTS

**EXTRA LIGHT KERNELS,
SWEET CRUNCHY MEATS,
THE FINEST TASTE OF
CHANDLER YOU WILL FIND
ON THE MARKET**



WALNUT GROWERS ASSOCIATION OF MOLDOVA

The varieties we grow: **FERNOR**



MID-SEASON HARVEST
1-6 OCTOBER

READY FOR SHIPMENT
10-15 OCTOBER

PLANTED AREA
ABOUT 700 HECTARES

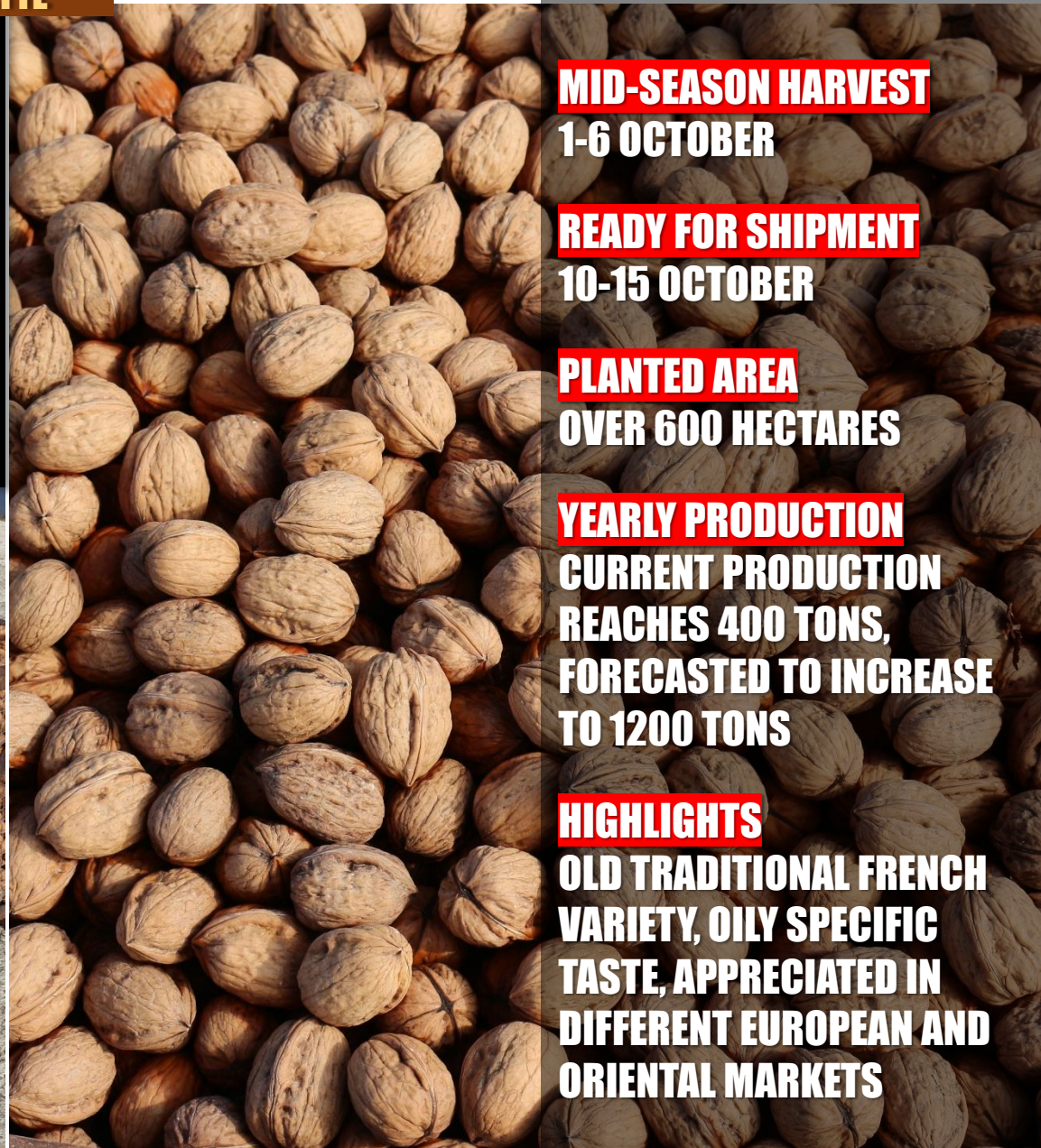
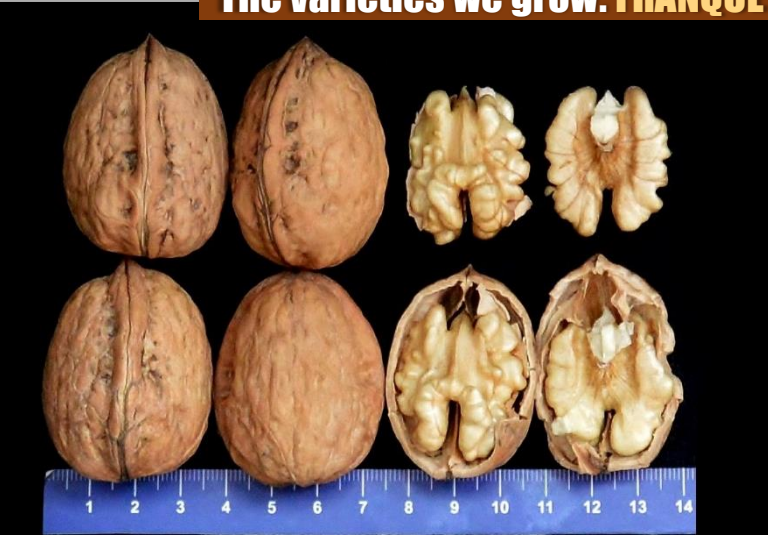
YEARLY PRODUCTION
CURRENT PRODUCTION
REACHES 250 TONS,
FORECASTED TO INCREASE
TO 2000 TONS

HIGHLIGHTS
EXTRA LIGHT COLOR, SOFT
AND SAVORY KERNELS,
EXCELENT SHELL SEAL, LONG
STORAGE



WALNUT GROWERS ASSOCIATION OF MOLDOVA

The varieties we grow: **FRANQUETTE**



MID-SEASON HARVEST

1-6 OCTOBER

READY FOR SHIPMENT

10-15 OCTOBER

PLANTED AREA

OVER 600 HECTARES

YEARLY PRODUCTION

**CURRENT PRODUCTION
REACHES 400 TONS,
FORECASTED TO INCREASE
TO 1200 TONS**

HIGHLIGHTS

**OLD TRADITIONAL FRENCH
VARIETY, OILY SPECIFIC
TASTE, APPRECIATED IN
DIFFERENT EUROPEAN AND
ORIENTAL MARKETS**



WALNUT GROWERS ASSOCIATION OF MOLDOVA

The varieties we grow: PESCIANSKI



EARLY HARVEST

15-20 SEPTEMBER

READY FOR SHIPMENT

25-30 SEPTEMBER



PLANTED AREA

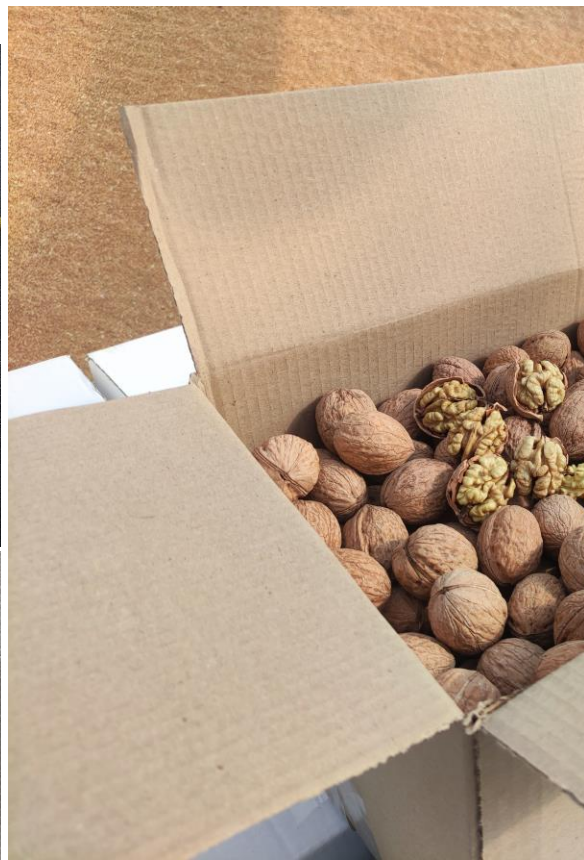
OVER 1500 HECTARES

YEARLY PRODUCTION

**CURRENT PRODUCTION
REACHES 300 TONS,
FORECASTED TO INCREASE
TO 2000 TONS**

HIGHLIGHTS

**ONE OF THE TASTIED
WALNUTS, SMOOTH KERNEL,
HIGH CRACKOUT**





WALNUT GROWERS ASSOCIATION OF MOLDOVA

The varieties we grow: **OLD MOLDOVAN VARIETIES**



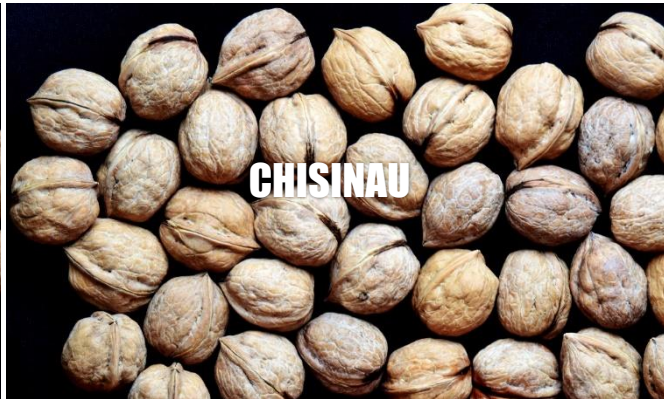
CAZACU



CODRENE



COGALNICEANU



CHISINAU



CALARASI



COSTIUJENI

EARLY-SEASON HARVEST

15-20 SEPTEMBER

READY FOR SHIPMENT

20-30 SEPTEMBER

PLANTED AREA

OVER 6000 HECTARES

YEARLY PRODUCTION

**CURRENT PRODUCTION
REACHES 2500 TONS,
FORECASTED TO STAY AT
ACTUAL LEVELS**

HIGHLIGHTS

**CHEAPER CULTIVAR
WALNUTS. RICH TASTE,
EXCELLENT FOR USE IN
GASTRONOMY OR IN LOWER
INCOME MARKETS**



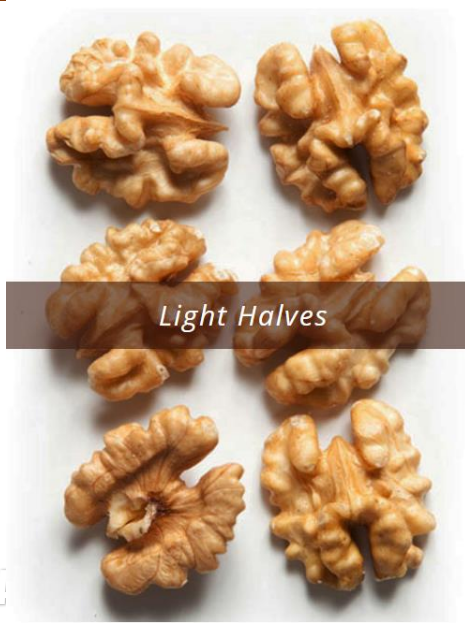


WALNUT GROWERS ASSOCIATION OF MOLDOVA

Shelled walnuts: Halves, Quarters, Amber, Pieces



Extra Light Halves



Light Halves



Mix (Halves, Quarters, Broken)



Amber



Pieces



Light Quarters & Broken



ALL SEASON AVAILABILITY

OCTOBER THROUGH AUGUST

CERTIFICATION

**WE SUPPLY CONVENTIONAL
AND ORGANIC KERNELS**

QUANTITY

**UP TO 12 000 TONS PER
YEAR (ALL PROCESSING
COMPANIES)**

FLEXIBILITY

**WE PROVIDE EXACTLY WHAT
YOU NEED IN THE QUANTITY
AND FREQUENCY YOU NEED
IT**

EXPORT GEOGRAPHY

**EUROPE, ASIA, MIDDLE EAST,
NORTHERN AFRICA**

Calărași



WALNUT GROWERS ASSOCIATION of MOLDOVA

WE GROW
THE TASTIEST WALNUTS
Grown with care and love in Moldova

www.moldovanuts.org
oleg.tirsina@gmail.com
+373 69 358 996

2023 Edition

